



KONICA MINOLTA

Copy & Scan/Fax Programs

Make & Models:

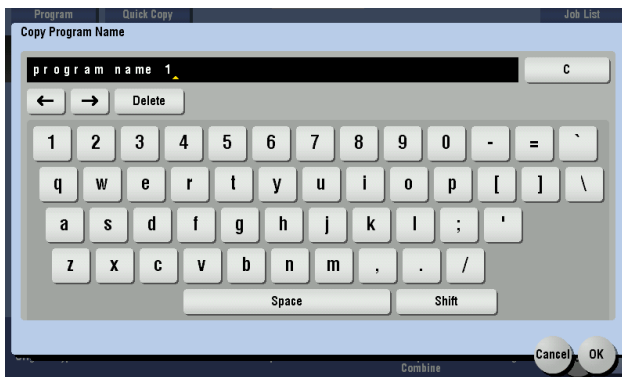
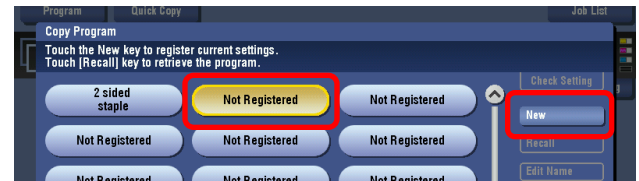
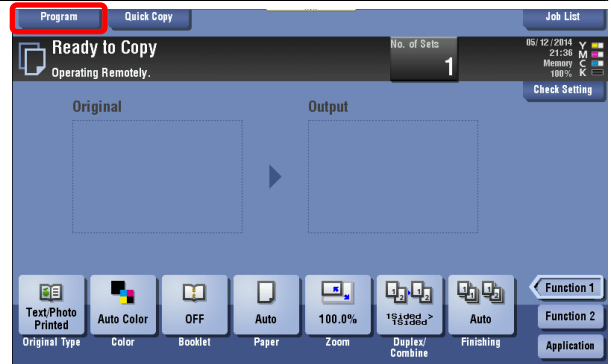
Konica Minolta bizhub: INFO-Palette Series (model numbers end in 4, 4e, 7, 8, 9 & iSeries). Also on some desktop colour models.



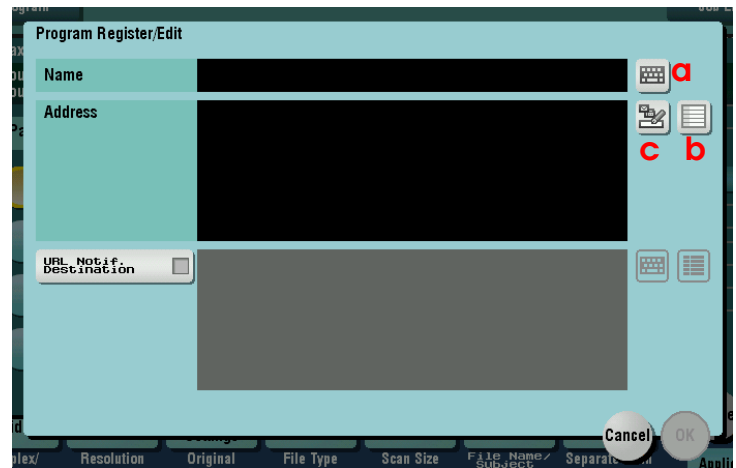
What's It Do?

When performing jobs regularly that require several settings, you can save all those settings into one easily recalled program button, rather than inputting the settings every time you perform the job. Programs can be set in both Copy and Scan/Fax modes.

- 1) Select all the settings you wish to program from the Copy or Scan/Fax screen.
- 2) From the top left corner of the screen select the Program button.
- 3) Select an unregistered button and press Register (or New, depending on the model).



Copy

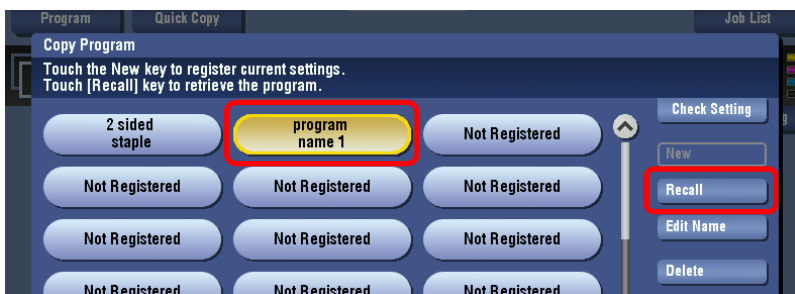


Scan/Fax

- 4) Enter a name for the program. Press OK to save the name and the Program.

Recalling a Saved Program

Select the Program button in the top left corner of the screen, highlight the desired program, and press the Recall button.



- 4) Tap into the Name field or select the Keyboard button (a) next to it to give the Program a name. Press OK to save the name.
- 5) You may also save a scan or fax destination with the program. This is optional, in case the scan or fax destinations will vary every time you use the program. Press the List icon (b) to select a pre-programmed scan/fax address, or the Direct Input icon (c) to manually program the destination.
- 6) Press OK to save the Program.