



Early Learning in the SD64 Gulf Islands

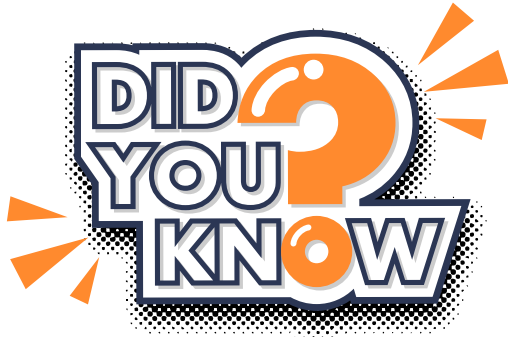
A monthly newsletter for caregivers, educators, and families

February 2024



Spotlight on Early Learning:

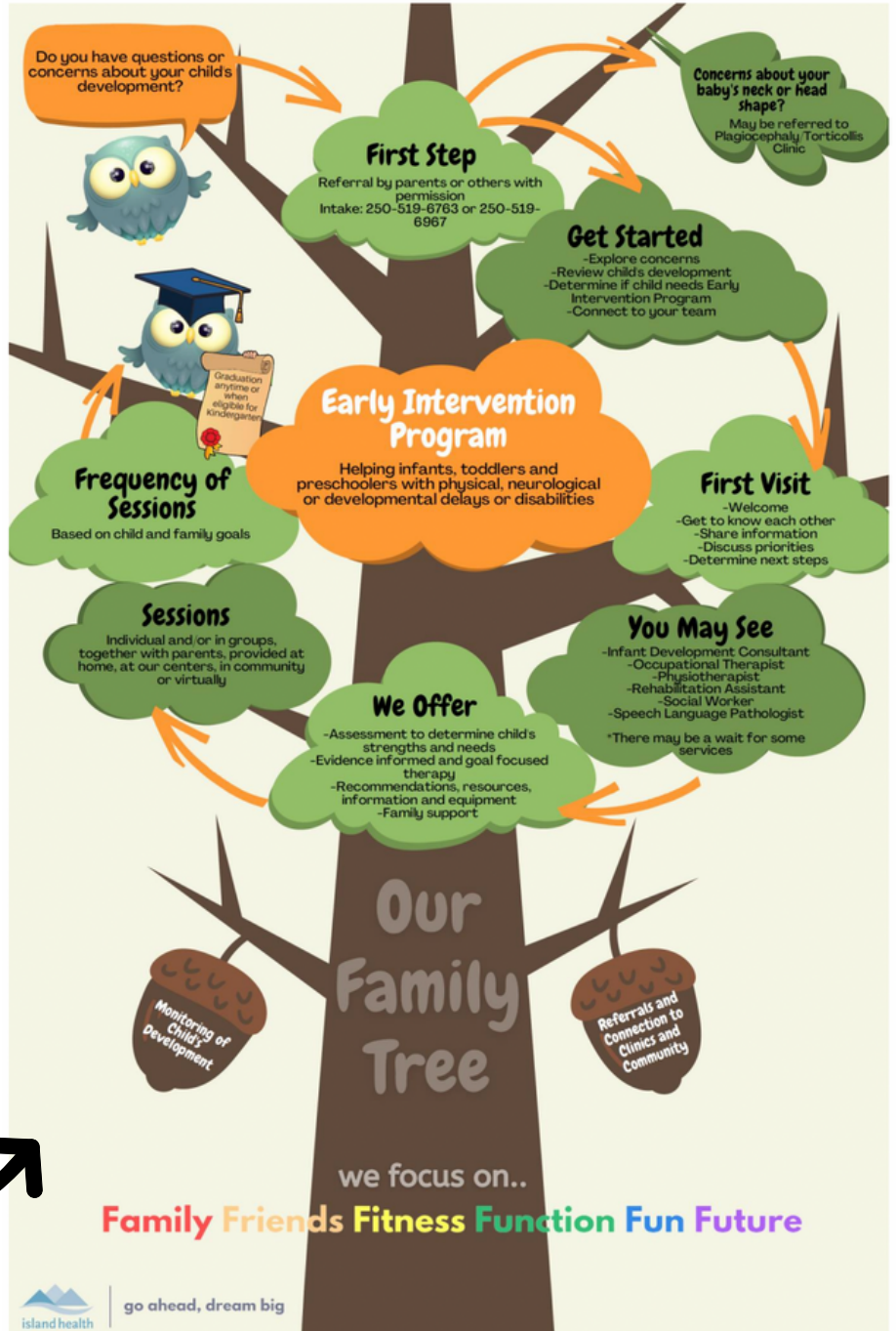
Island Health Early Intervention Program (EIP) Supports



The Island Health Early Intervention Program (EIP) provides services for children from birth to 5 years of age with, or at risk for, developmental delays, living in Greater Victoria and the Southern Gulf Islands.

It is a multidisciplinary service based on child needs and family priorities.

Visit [Island Health](#) to Learn More.



To learn more about Early Learning in SD64:





Strengthening Early Years to Kindergarten:

Upcoming Learning Opportunity for Early Years' Parents/Caregivers

Join us on Zoom on Feb 27 from 4:30-5:30 to learn more from about:

- ✓ big feelings in children and how to support as a confident co-regulator
- ✓ evidence-based ideas for families on how to help support their child's transition to new spaces, people and routines.



[CLICK TO REGISTER](#)



Monthly Math Moment: What math lives here?



Using these pictures, try the following prompt with your child:

“How many do you see?”
There are multiple ways to answer this question! Try finding other things in nature to explore the math that lives around

us.

